

The background of the slide is a photograph of a city street scene. On the left, a person in a light blue shirt and dark pants stands on a sidewalk. The street is lined with buildings, and there are trees and plants visible. A large teal semi-transparent rectangle is overlaid on the center of the image, containing the title and speaker information.

# The Circular Economy at the City Level

## Policy, Innovation and Collaboration

*Sunandan Tiwari, Senior Manager, Global Projects  
ICLEI World Secretariat*



# Why we act



+100,000 per day



6 mio. t

# Cities as Circular Systems





## 2 Regenerative cycles

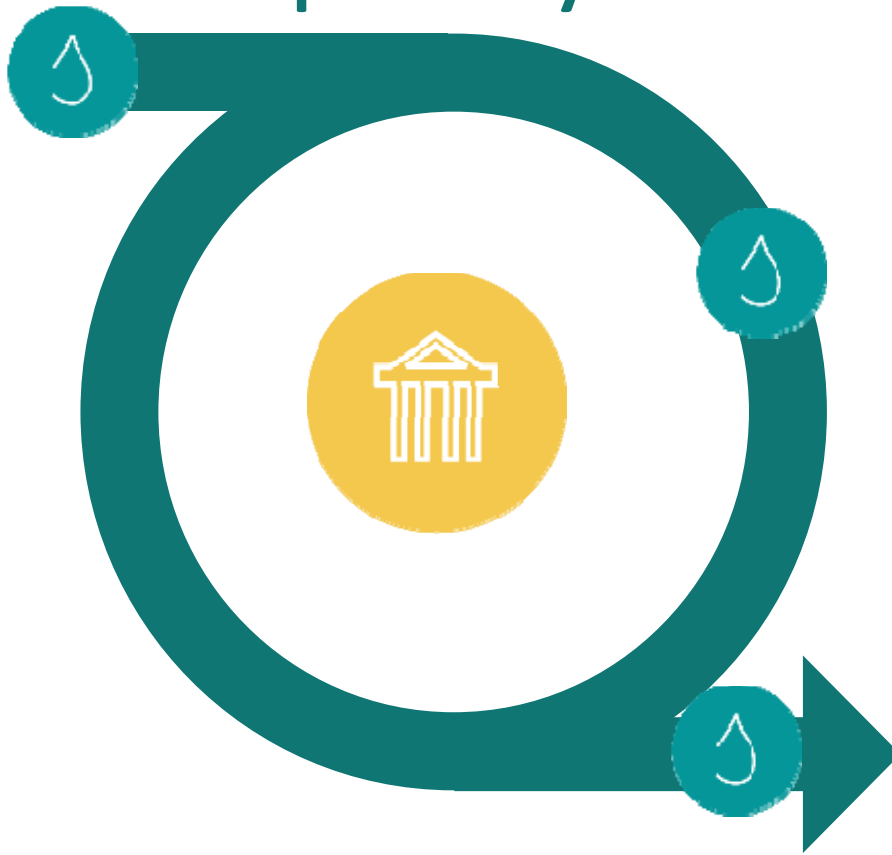


**Ressource remains in the same system in a perpetual closed loop.**



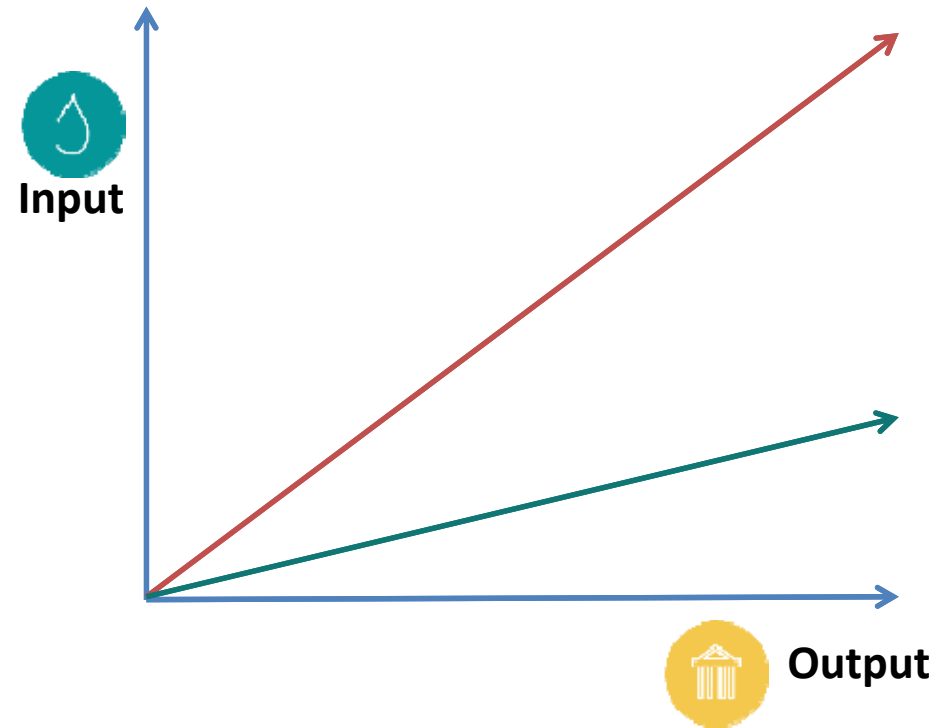
**Ressource taken from and fed back into ecosystem within regenerative capacity.**

### 3 Open cycles



Resource is cycled or cascaded through a system but not indefinitely.

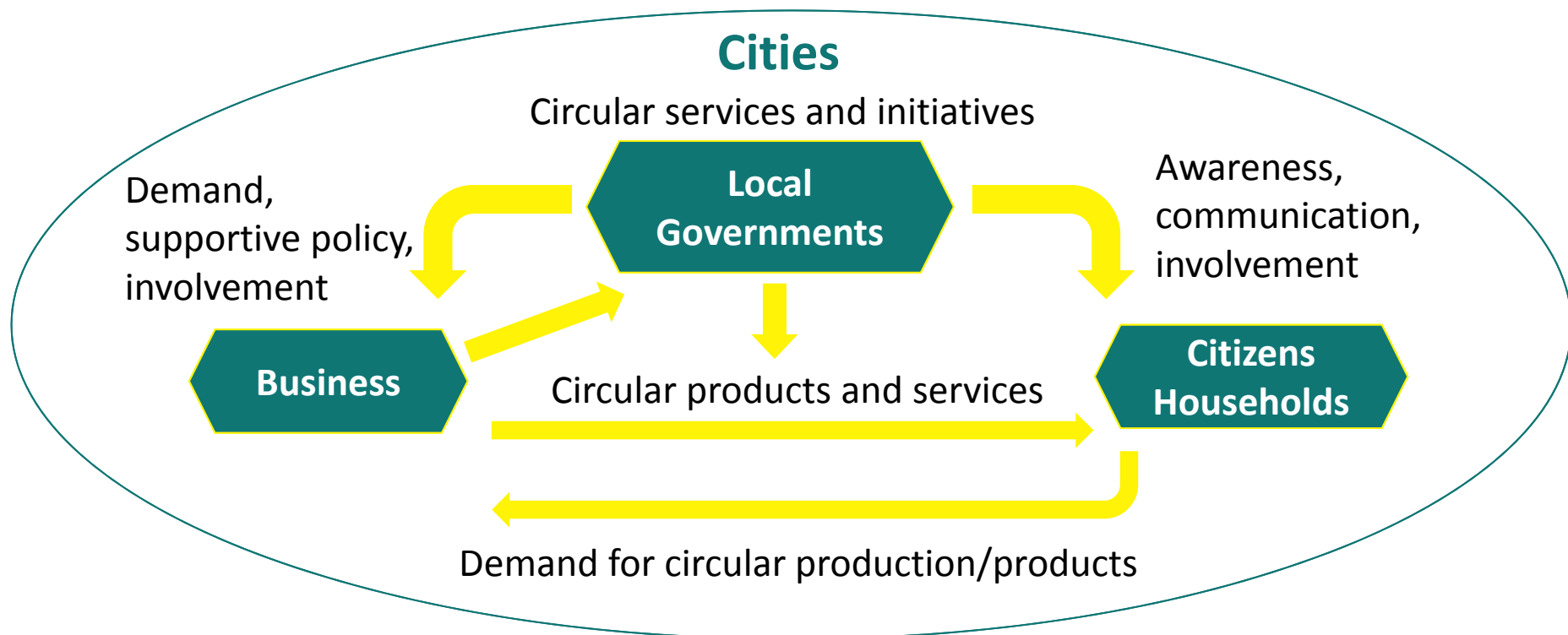
### 4 Optimized linearity



The system is more efficient in terms of resource use but still linear.

# Need for a Multi-stakeholder Approach

Learning from Climate Change Mitigation and Adaptation implementation – Cities understand that the transition towards a fully circular economy will need to include active local stakeholders including businesses, citizens, academia

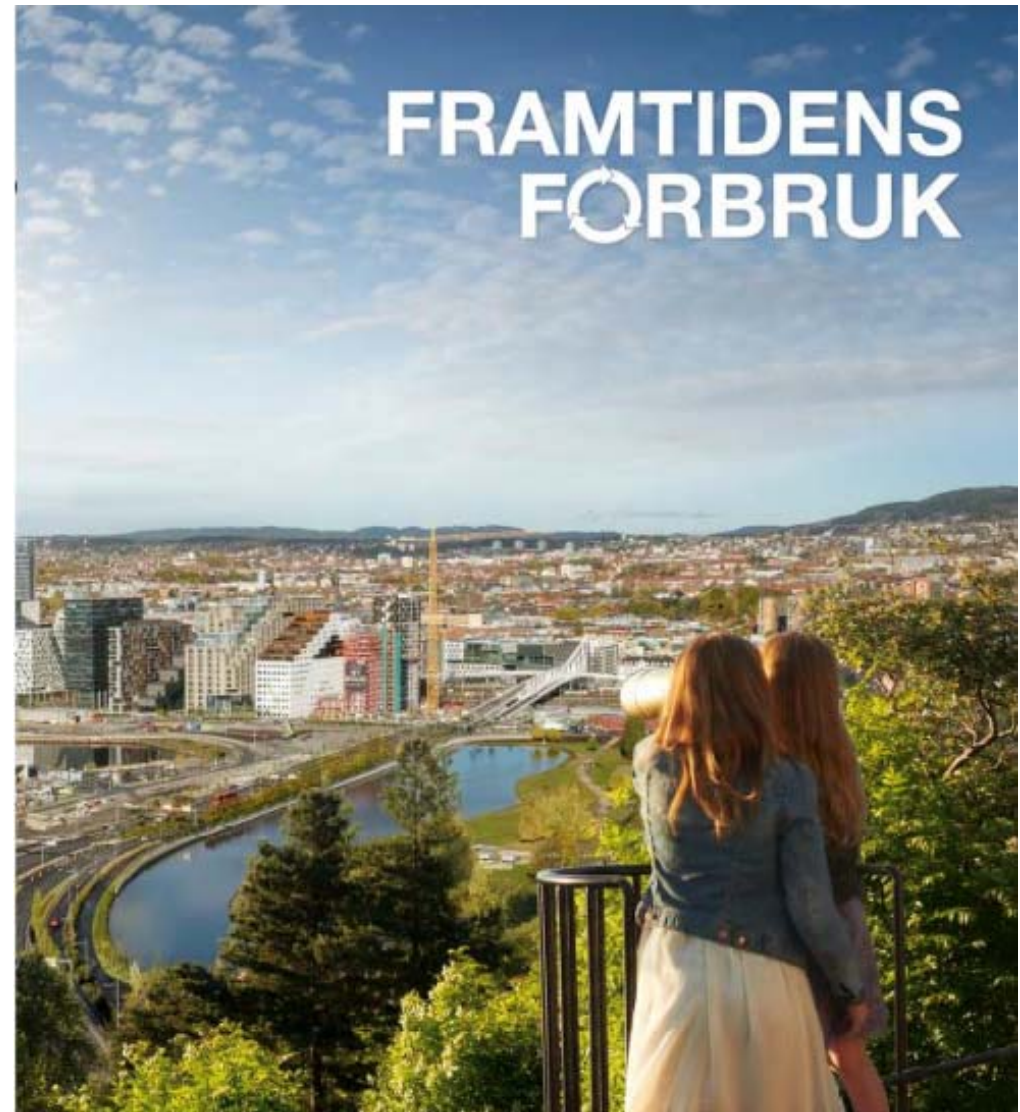


# Circular Policy Pivots in Cities

## Circular Strategies in Oslo

- Strategy for a sustainable and circular consumption in Oslo
  - Vision of 100% materials recycling
  - Focus on Recycling, re-use and sharing
- Circular Procurement Guidelines
- New Waste Strategy

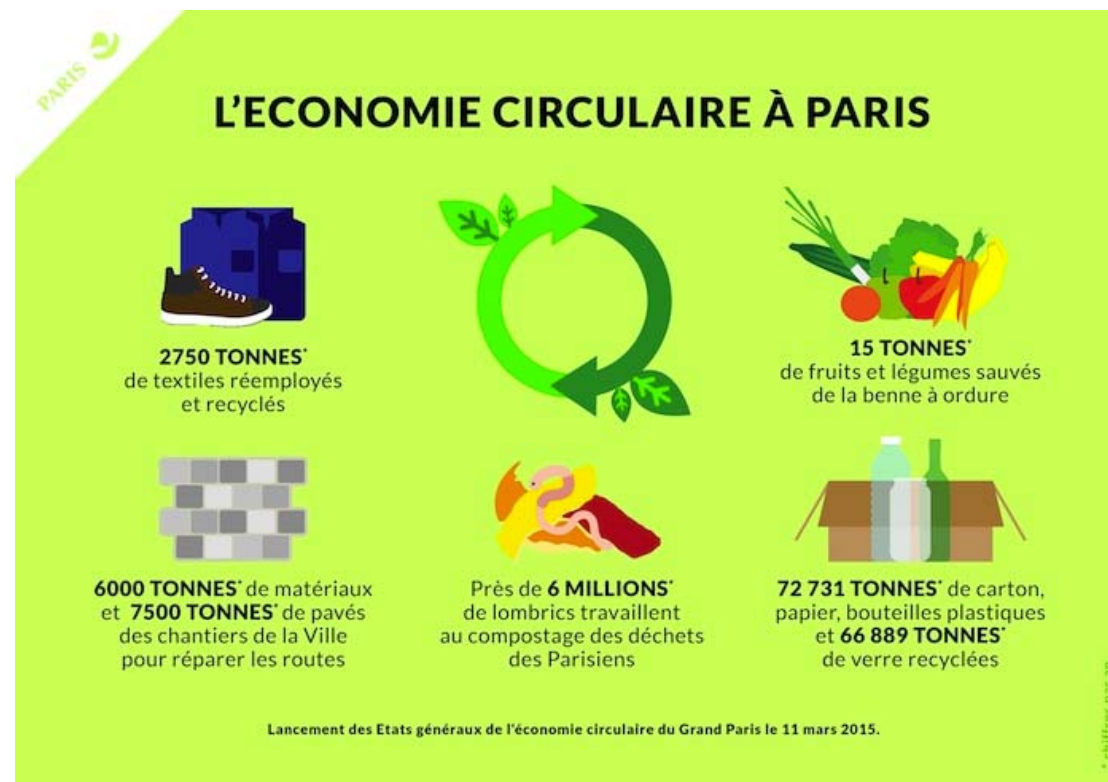
<https://www.oslo.kommune.no>



# Circular Policy Pivots in Cities

## Paris Circular Economy Plan for 2020

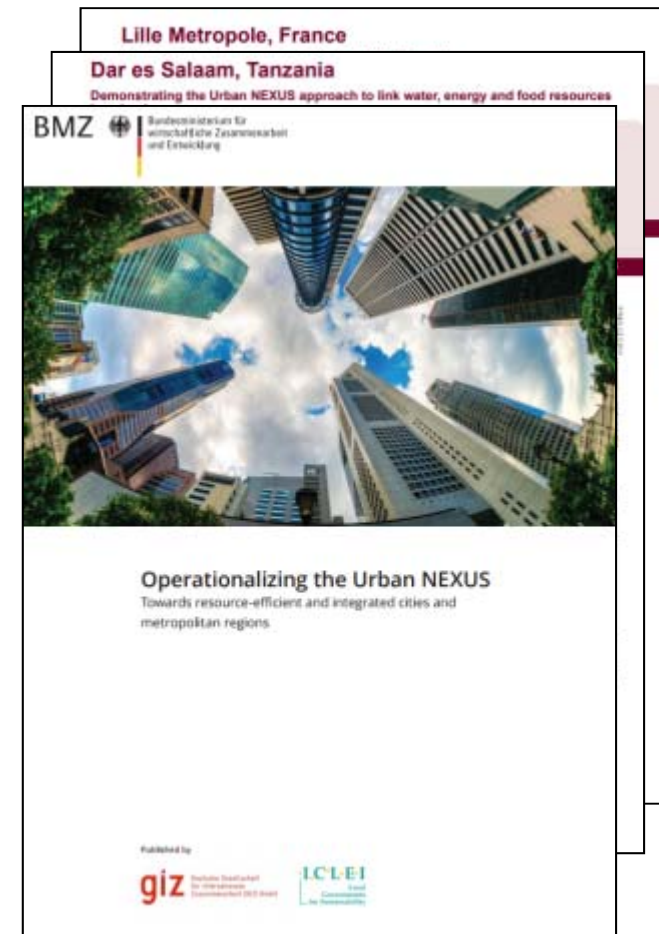
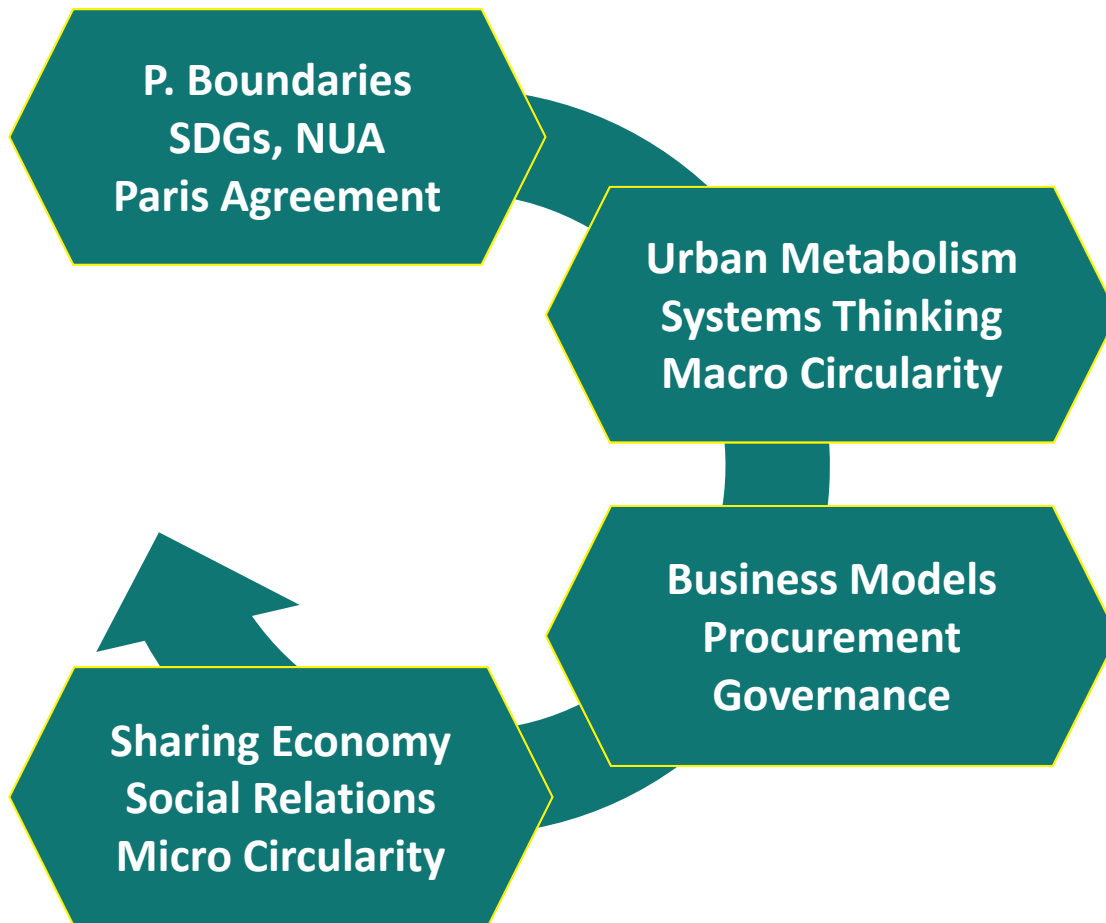
- Multi-year Approach
  - 2016 feasibility study
  - 2017 – 15 actions
  - 2018-2019 - 10-15 actions
- Focus on support for economic players, increasing innovation and linking business and citizen actors



<https://www.actu-environnement.com/media/pdf/news-29327-feuille-route-plan-economie-circulaire-paris-2020-15>



# A cross-cutting approach



# Related ICLEI initiatives

