



Ministry for the
Environment
Manatu Mo Te Taiao

New Zealand's second multilateral assessment

Ambassador Mark Sinclair

Marrakesh, 14 November 2016

NEW ZEALAND



Located in the
South Pacific Ocean

NZ

gross domestic
product

225.3

BILLION (NZ\$)

population

4.7

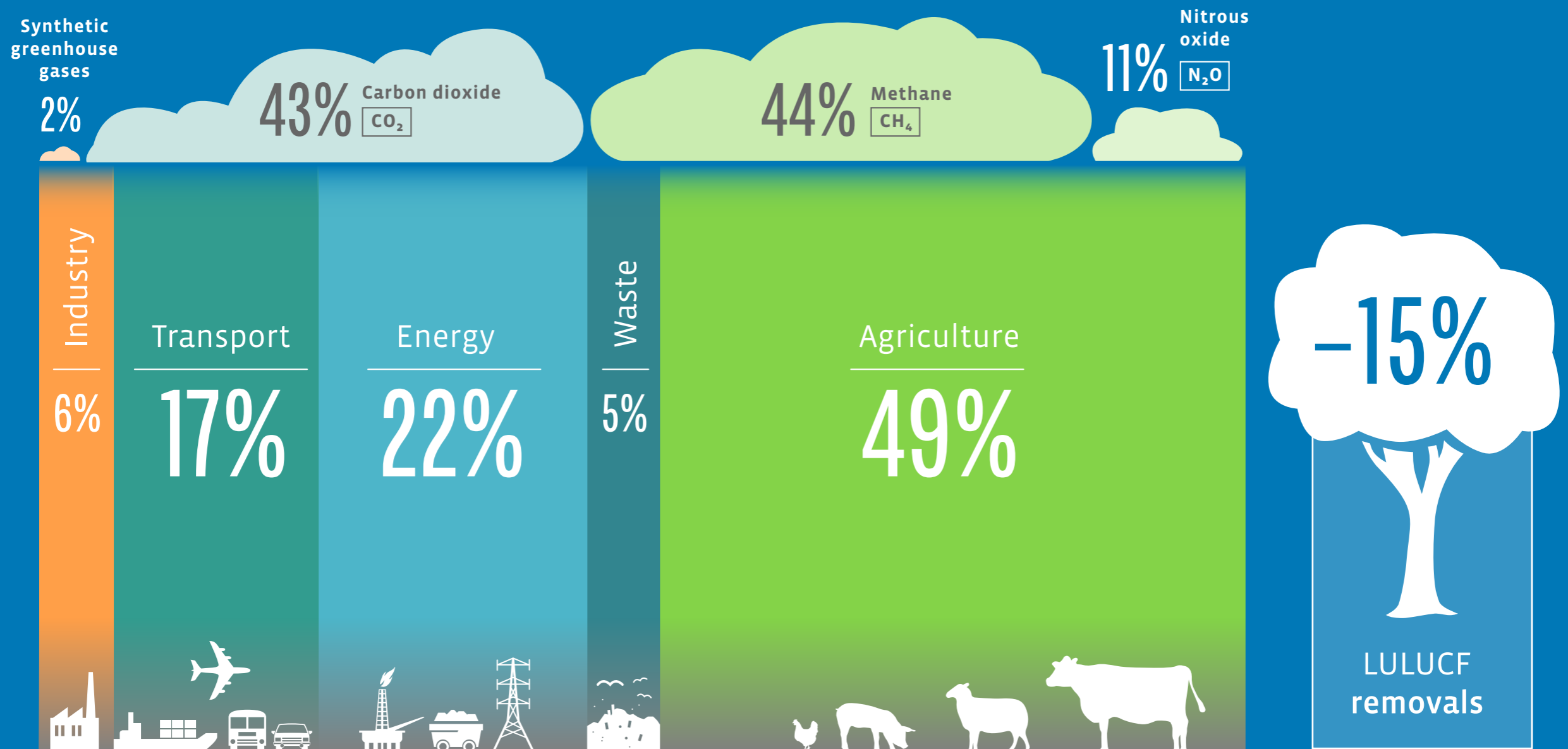
MILLION

share of global
emissions

0.16%

EMISSIONS PROFILE

- High proportion of emissions from the agriculture sector
- Over 40% of emissions are methane emissions
- Emissions intensity of our economy has decreased by 34% since 1990



TARGETS

- ✓ Achieved our Kyoto Protocol CP1 target
- ✓ On track to meet our 2020 target
(5% below 1990)
- ✓ New Zealand's NDC is 30% below
2005 levels by 2030
- ✓ Longer-term target: 50% below 1990
levels by 2050

2020 TARGET



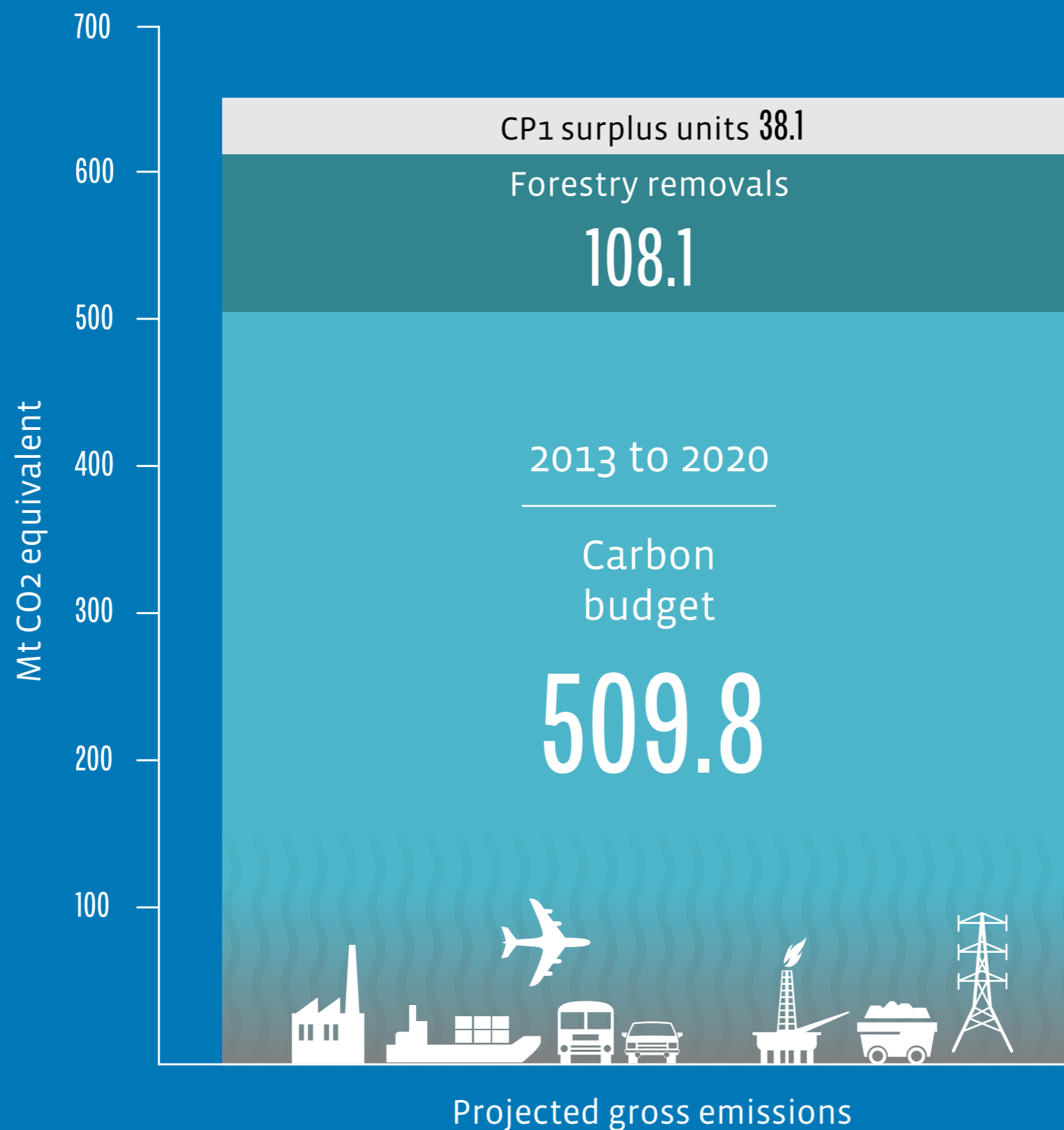
5% below 1990 levels by 2020



On track to meet target through a combination of:

- *Domestic emissions reductions*
- *The removal of carbon dioxide by forests*
- *Recognising surplus units from CP1 of the Kyoto Protocol*
- *Participation in international carbon markets*

MEETING OUR 2020 TARGET



KEY POLICIES AND MEASURES

New Zealand Emissions Trading Scheme

Measures across all sectors of the economy

Mitigation is a cross-agency, whole of government effort



NZ ETS: DESIGN BASICS

Coverage: intended to cover all gases and all sectors over time

- *As of 2016, approximately 50% of gross emissions are covered*
- *Remaining emissions are from agriculture, which must be reported but farmers do not currently have to surrender units*

Point of obligation: generally upstream, to minimise complexity

Forestry: treated as both a source of units and as an emitter

Eligible units: currently only NZ Units and NZ-originated Assigned Amount Units

- *Kyoto units previously eligible, until mid-2015*

Free allocation: restricted to activities that are both emissions intensive and trade exposed

NZ ETS currently being reviewed to ensure it is effective to help meet our targets and transition to a low emissions economy

ENERGY

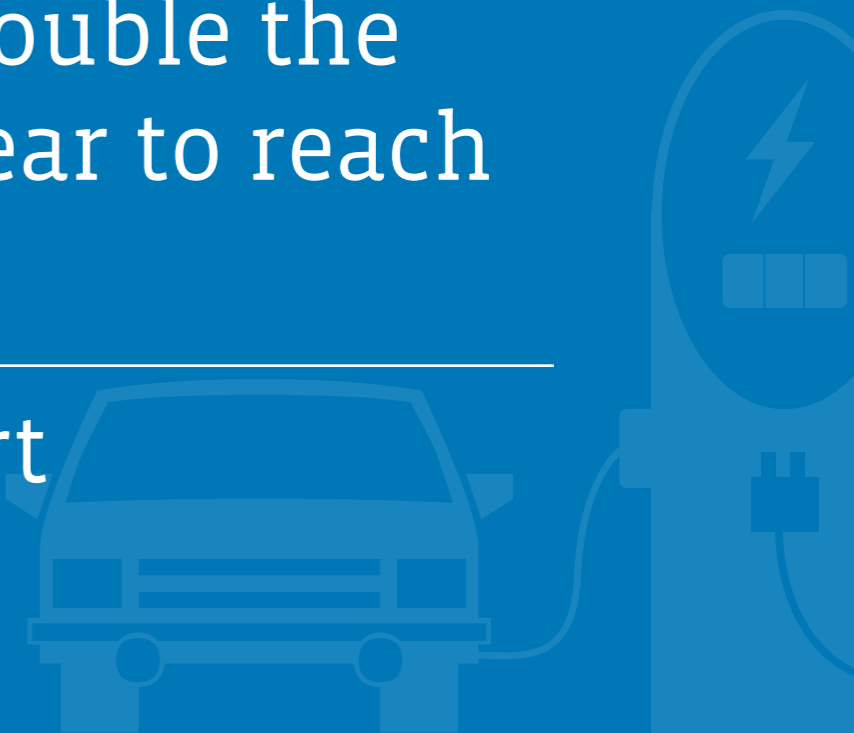
81% of Electricity was from renewable sources in 2015

Target of **90%** by 2025

40% of total primary energy supply from renewables, 3rd highest in OECD

Transport: New policy package to double the number of electric vehicles every year to reach **64,000** by 2021

\$1.2 billion (NZ\$) on public transport

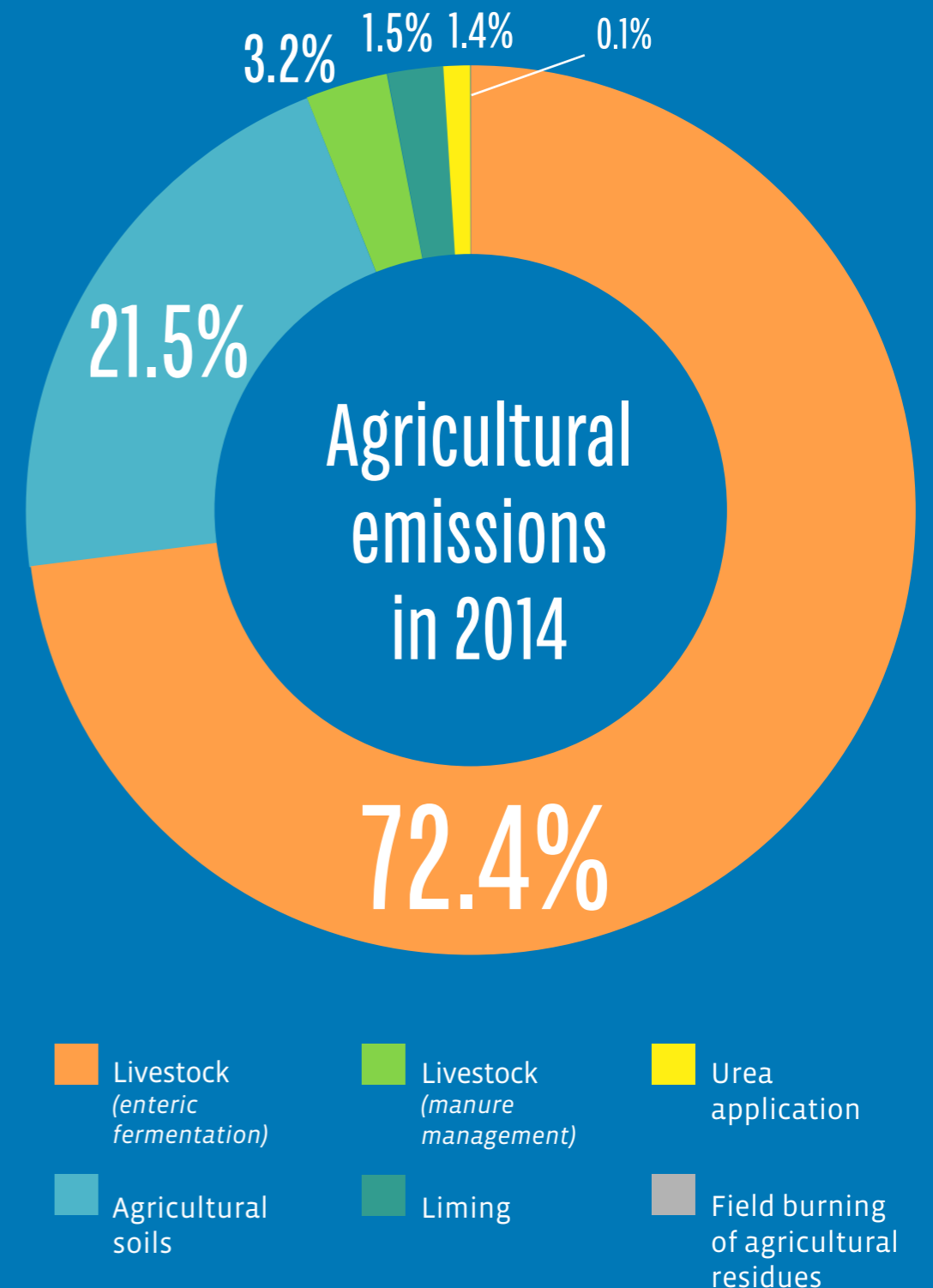


AGRICULTURE

Over **95%** of agricultural production exported

New Zealand's agricultural production feeds an estimated **40 million** people per year

\$20 million (NZ\$) a year invested in agriculture GHG research



FORESTRY

Forests cover **37%**
of New Zealand
AND
rules offset **15%**
OF OUR
emissions in 2014



Net removals from
afforestation/
reforestation,
deforestation and
forest management are
counted towards our
2020 target



Permanent Forest
Sink Initiative



Afforestation Grant
Scheme - Plant

17
MILLION



trees on 15,000
hectares by 2020



Ministry for the
Environment
Manatu Mo Te Taiao