



United Nations Climate Change
Global Climate Action

Global Climate Action

United Nations Climate Change



Segment 2: Decarbonizing our cities, enhancing resilience while driving social equity, through vertical integration and investments

Global Climate Action
United Nations Climate Change

Looking at the wider city-scape and the strategic necessity for a climate neutral future.

How are cities and regions contributing to local, national and global climate change mitigation and adaptation goals?

What can be replicated and scaled up?

Focus on:

- People-centered, equitable and participatory policies
- Effective vertical integration and sound investments
- A lasting change which demands a systemic shift

What is new? A snapshot:

- Commitments and reporting of subnational governments
- Finance
- Social equity and inclusion

Marrakech
Partnership



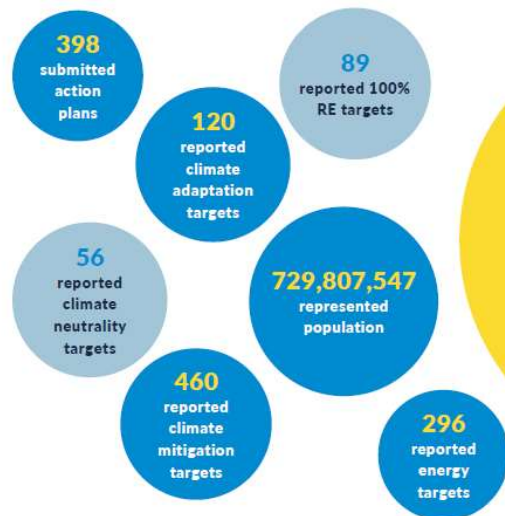
Highlights from the CDP-ICLEI unified reporting system

WITH THE EFFECTS OF CLIMATE CHANGE ON THE RISE, THERE IS AN URGENT NEED FOR ACTION AT ALL LEVELS TO ACHIEVE CLIMATE NEUTRALITY BY MID-CENTURY.

In this context, local and regional governments will play a critical role in tackling major emissions sources. One crucial step in this process is climate reporting. The easier the reporting process, the more time governments can focus on action.

That's why in 2019, CDP and ICLEI partnered to make subnational reporting even easier. By streamlining ICLEI's carbonn Climate Registry (cCR) and CDP's reporting platform into a unified reporting system, this partnership reduces the burden of reporting for local and regional governments and provides a clearer picture of the scope and impact of subnational climate action.

Here are 2019 aggregated data from the CDP and ICLEI unified reporting system.



The ICLEI network in action

The carbonn Center

- Provides reporting support and guidance for the ICLEI network
- Conducts data validation and quality control for specific initiatives
- Supports reporting entities to that participate in sector specific projects and programs



Find out more on <https://carbonn.org/> or contact carbonn@iclei.org



Search 'Underline'

- Export PDF
- Create PDF
- Edit PDF
- Comment
- Combine Files
- Organize Pages
- Redact
- Protect
- Optimize PDF
- Fill & Sign
- Send for Review
- More Tools

Convert and edit PDFs with Acrobat Pro DC
Start Free Trial

Finance

- To scale up it is necessary to understand local needs of community of all sizes.
- Cooperation to be expanded to subnational level.
- Tracking subnational level investments needed.

Marrakech Partnership



Transformative Actions Program

FINANCE TOOLKIT: AN INTRODUCTION

Many local and regional governments have ambitious climate action plans but are unable to access financing to implement them. Although significant efforts have been made in recent years, access to finance and local and regional governments capacity to design bankable projects remain key challenges.

This finance toolkit aims to empower local and regional governments to overcome these barriers by providing an overview of possible financing mechanisms, guidance and training materials.



CLIMATE FINANCE DECISION-MAKING TREE

This decision-making tree guides local and regional governments through a series of questions that help them consider different financing tools. Also, check out the [interactive online decision-making tree](#) with in depth descriptions of each financing tool.



CLIMATE FINANCE GLOSSARY

This resource is a collection of essential terms and definitions used in international climate finance, financing mechanisms and finance in general.



CLIMATE FINANCE OPPORTUNITIES

This catalogue of opportunities features financial institutions and other actors that have programs and initiatives which support local and governments in their project preparation and implementation.



CLIMATE FINANCE BIBLIOGRAPHY

This inventory of studies, reports, guidance and toolkits includes links to various knowledge centers and learning platforms.



The Urban-LEDS II project is funded by the European Union.
The views expressed on this document can in no way be taken to reflect the official opinion of the European Union.

#climatefinance
#ICLEI Finance Toolkit

Social equity

Address issues, from how people move to where they live and what they consume, climate action impacts the daily lives of cities' residents in many different ways.

Social equity and public participation are essential prerequisites to the long-term sustainability of the transition.

**Inclusive
employment
opportunities**

**Public
participation and
co-design**

**Supporting
residents
initiatives**

**Monitoring effects
on vulnerable
groups**

**Ensuring equitable
access to services
and resources**

**Marrakech
Partnership**



Segment 2: Programme

- Moderator: **Maryke van Staden**, Director, ICLEI's Bonn Center for Local Climate Action and Reporting
- Keynote: **Maimunah Mohd Sharif**, Executive Director, UN Habitat
- Panelists:
 - **Vera Rodenhoff**, Head of Division, German Federal Ministry of Environment, Nature Conservation and Nuclear Safety
 - **Juan Carlos Vega Milke**, Undersecretary of Energy, Yucatan State, Mexico
 - **Daniela Mastrangelo**, General Director of Innovation and Environmental Quality, City of Rosario, Argentina
 - **Sebastian Schlecht**, Project Manager European Green Capital 2017, City of Essen, Germany
 - **Saliha Dobarzic**, Senior Climate Change Specialist, the Adaptation Fund
 - **Philippe Akoa**, President of RIAFCO (African Network of Subnational Development Banks),

Segment 2: Programme

- 10 mins Q&A - *Embedding social equity into climate emergency response action*
- Closing remarks of Human Settlements Session by high level authority – **Gonzalo Munoz**, Chile Climate Champion

Marrakech
Partnership



Global Climate Action

United Nations Climate Change



Thank You

For more information, please contact:
carbonn@iclei.org